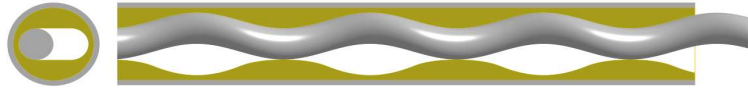




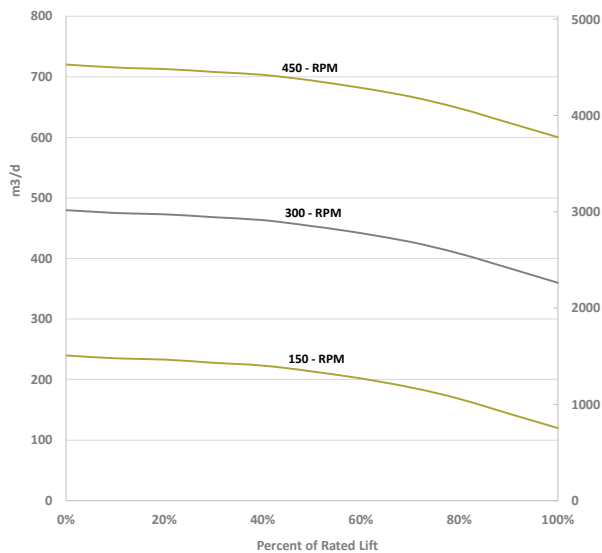
PUMP SPECIFICATION

160M - STD - FL - FLOT

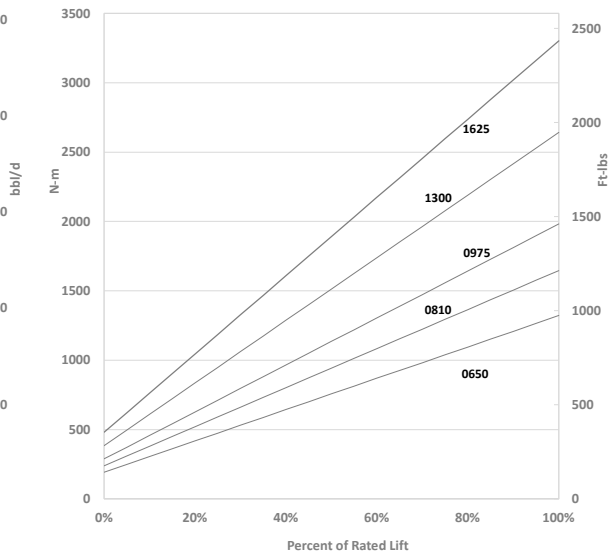


160 m3 / Day / 100 RPM (1006 bbl / Day / 100 RPM)						
Available Models		160 M 0650	160 M 0810	160 M 0975	160 M 1300	160 M 1625
		Geometry: Single Lobe		Operating Speed: 50 - 500 RPM		Free Gas Volume Fraction: 40% continuous
Swept Rotor Angle:		48		Orbit Helix - mm (in): 96.00 (3.780)		Intake cavity area - mm ² (in ²): 2304 (3.57)
Pump Lift H2O - m (ft)		650 (2132)	810 (2656.8)	975 (3198)	1300 (4264)	1625 (5330)
Rated Pressure kPa (psi)		6500 (943)	8100 (1175)	9750 (1414)	13000 (1885)	16250 (2357)
Rated Torque N-m (ft-lbs)		1322 (974)	1646 (1213)	1982 (1460)	2642 (1947)	3303 (2434)
ROTOR	Rotor Top Connection mm (in)	1 1/8" API Pin				
	Rotor Head Diameter mm (in)	57.15 (2.25)				
	Overall Rotor Length m (in)	6.01 (236)	7.38 (291)	8.76 (345)	11.51 (453)	14.26 (561)
	Weight kg (lbs)	81 (178)	100 (220)	119 (262)	157 (345)	196 (431)
STATOR - STD - FL	Nominal Rotor Drift OD mm (in)	72.67 (2.861)				
	Stator OD mm (in)	127.0 (5.00)				
	Collar OD (mm)	STD - 132 (5.200) // FL 127 (5.000)				
	Connection Discharge - Intake	STD - 4 1/2" EUE Box // FL 4 1/2" NUE Box				
	Stator Overall Length w TB m (in)	6.17 (243)	7.54 (297)	8.92 (351)	11.67 (459)	14.42 (568)
	Weight kg (lbs)	158 (348)	198 (436)	238 (524)	317 (697)	396 (871)
STATOR - FLOT	Distance TB to Elastomer mm (in)	300 (12)				
	Tagbar/sub bottom connection	3 1/2" EUE Pin				
	Stator OD mm (in)	127.0 (5.00)				
	Collar OD mm (in)	127.0 (5.00)				
	Connection Discharge - Intake	3 1/2" EUE Box - 4 1/2" NUE Box				
	Stator Overall Length w TB m (in)	7.39 (291)	8.76 (345)	10.14 (399)	12.89 (507)	-
Weight kg (lbs)	197 (433)	237 (521)	276 (607)	356 (783)	-	
Distance TB to Elastomer mm (in)	300 (12)					
Tagbar/sub bottom connection	3 1/2" EUE Pin					
NOTE						

Target in Well Flow Rates m3/d (bbl/d)



Target In Well Torque N-m (ft-lbs)



'CAUSE WE GIVE A S#%T